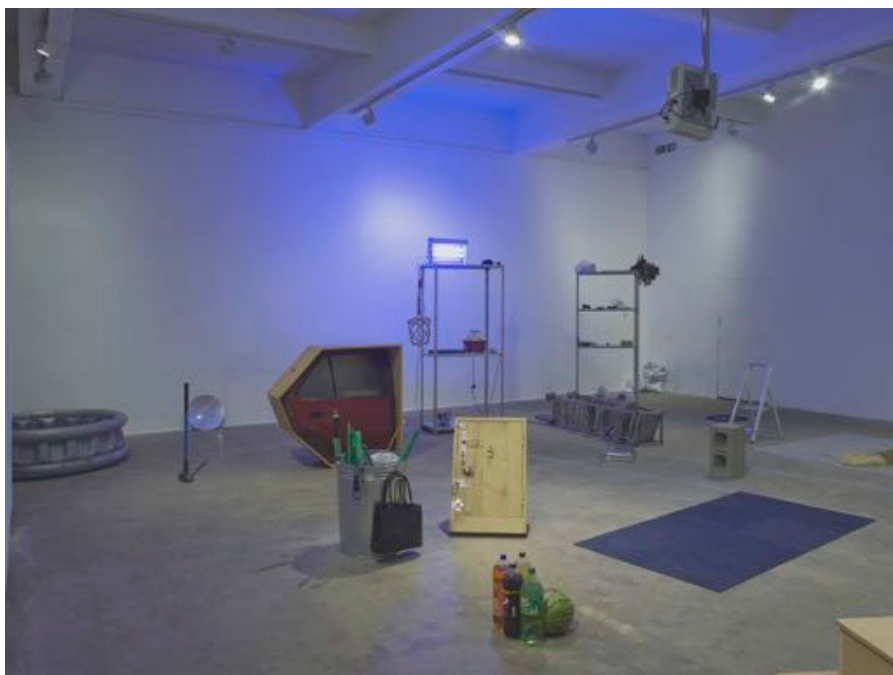


CHRONICLE





“Chisenhale Gallery continues to push beyond the parameters of convention, it does so in a manner that is both joyful and infectious. Whether at the point of urgent new discovery, or looking back to refresh more established positions, Chisenhale never wavers in its commitment to critical engagement and provocation.”

Helen Marten, Artist and Chisenhale Gallery Trustee

Above Installation view of Lawrence Abu Hamdan’s exhibition, *Earwitness Theatre*, 2018. Photo: Andy Keate.

Right Opening of Banu Cennetoğlu’s exhibition at Chisenhale Gallery, 2018. Photo: Mark Blower.

Cover image Opening of Mandy El-Sayegh’s exhibition, *Cite Your Sources*, 2019. Photo: Mark Blower.

CHISENHALE

Chisenhale Gallery commissions and produces contemporary art, supporting international and UK-based artists to pursue new directions and make their most ambitious work to date. For audiences the gallery provides opportunities to experience this process of art production through participation and critical reflection.

Chisenhale Gallery has an award winning, 37-year history as one of London’s most innovative forums for contemporary art. With a reputation for identifying new talent, the gallery is committed to engaging a broad range of audiences with a particular focus on young people.

The gallery was founded by artists in the 1980s in a former veneer factory and brewery building, located in the heart of London’s East End. The gallery continues to place artists at the centre of its activities, operating as a production agency, exhibition hall, research centre and community resource.

Chisenhale Gallery is a registered charity and part of Arts Council England’s National Portfolio. The gallery fundraises for the programme in its entirety, as well as more than half of all core costs, through trusts, foundations and individual donations. All exhibitions and the majority of events are free.



COMMISSIONS

At the heart of Chisenhale Gallery's programme is a remit to commission and produce new work, supporting artists from project inception to realisation. Chisenhale Gallery produces four major commissions each year presented as exhibitions at the gallery and at partner venues, alongside intermittent offsite and online commissions.

The programme represents an inspiring and challenging range of voices and art forms, based on extensive research and strong curatorial vision. The programme explores myriad forms of exhibition making and artists are chosen for their desire to explore pioneering new forms and discourses.

Recent lines of enquiry include the impact of new technologies on image production and circulation, as well as questioning how history is constructed in order to challenge the consumption and distribution of knowledge. The programme has also addressed broader questions surrounding the body as a site of political enquiry and the ethics of collaboration.

The 2020 *Commissions Programme* comprises four exhibitions by Imran Perretta, Yu Ji, Thảo Nguyễn Phan and Abbas Akhavan. Working with video, sound, sculpture and painting these artists explore the impact of the environment, be it ecological, urban or political, on the virtual, individual and social body.



“One of London’s most radical commissioners of new art.”

Time Out

Above Opening of Paul Maheke’s exhibition, *A fire circle for a public hearing*, 2018. Photo: Mark Blower.

Left Installation view of Ghislaine Leung’s exhibition, *CONSTITUTION*, 2019. Photo: Andy Keate.

LEGACY

Early exhibitions at Chisenhale Gallery included solo presentations by Chisenhale Studios artists and group shows including *Ruins of Glamour* and *Beyond Structure*, as well as *Essential Black Art*, curated by Rasheed Araeen. In the 1980s and 1990s Chisenhale Gallery produced first major solo exhibitions in the UK with artists such as Donald Rodney, Lubaina Himid, Rachel Whiteread, Cornelia Parker, Gillian Wearing and Wolfgang Tillmans.

More recently, Chisenhale Gallery has commissioned new works by artists such as Hito Steyerl, Lynette Yiadom-Boakye, Ed Atkins, Helen Marten, Jordan Wolfson, Camille Henrot, Jumana Manna, Maria Eichhorn, Alex Baczynski-Jenkins, Luke Willis Thompson, Hannah Black, Paul Maheke, Banu Cennetoğlu, Lawrence Abu Hamdan, Mandy El-Sayegh and Sidsel Meineche Hansen.

Artists participating in the recent programme have been awarded or nominated for the Turner Prize, the Deutsche Börse Photography Foundation Prize and the Prix Fondation d'entreprise Ricard. Chisenhale alumni have also participated in major international exhibitions such as the Venice Biennale, New Museum Triennial, Liverpool Biennial and documenta.



RESEARCH

Research at Chisenhale Gallery encompasses a wide range of activity and is informed by the institution's 37-year exhibitions history and the gallery's current commissioning process. *Chisenhale Research* is a new strand of programming, which reflects on and engages audiences with this rich history. The programme includes completing the historic archive, as well as commissioning researchers to investigate new approaches to this material.

"The seeding ground of bright young artists."

Charlotte Higgins, *The Guardian*



Right Installation view of Cornelia Parker's exhibition, *Cold Dark Matter: An Exploded View*, 1991. Courtesy of the artist and Frith Street Gallery. Photo: Hugo Glendinning.

Above right Symposium, part of Maria Eichhorn's exhibition, *5 weeks, 25 days, 175 hours*, 2016. Photo: Mark Blower

PARTNERSHIPS

Partnerships are central to Chisenhale Gallery's activities, enabling the production of ambitious projects. Through our unique commissioning model, we strategically create partnerships with UK and international institutions. Artworks commissioned by Chisenhale Gallery now reach up to 1,000,000 people annually.

Current and recent commissioning and production partners include: Liverpool Biennial; *The Guardian*; Tate Modern; Vleeshal Center for Contemporary Art, Middelburg; Contemporary Art Museum, St Louis; Witte de With Centre for Contemporary Art, Rotterdam; Institute of Modern Art, Brisbane; EMPAC, New York; Create London; Spike Island, Bristol; Baltic Centre for Contemporary Art, Gateshead; The Whitworth, University of Manchester; Void, Derry~Londonderry; Institute of Contemporary Art, London; and BBC Arts.



Chisenhale Gallery is a founding member of Common Practice, London, an advocacy group for the contemporary visual arts sector in the capital. Chisenhale Gallery is also a member of Plus Tate, a network of museums and galleries across the UK, set up by Tate to strengthen the contemporary visual arts ecology by sharing resources.

Above Installation view of Maeve Brennan's exhibition, *The Drift*, 2017. Photo: Mark Blower.

Left Banu Cennetoğlu, *List of 34,361 documented deaths of refugees and migrants due to the restrictive policies of 'Fortress Europe'* Documentation as of 5 May 2018 by UNITED for Intercultural Action. This edition of *The List* was produced by Chisenhale Gallery and Liverpool Biennial, and printed and distributed by *The Guardian* on World Refugee Day, 20 June 2018. Photo: Andy Keate.



“Chisenhale Gallery is really a space that allows an artist to go to another level of their practice or step out of it and renew it.”

Camille Henrot, Artist

“It was a true privilege to work so intimately with an intellectually rigorous team with a rare level of personal investment beyond the commission, which I will treasure.”

Mandy El-Sayegh, Artist

“Working with Chisenhale Gallery was, quite frankly, wonderful [...] it was my first institutional show, and I couldn’t have hoped for a more considerate working relationship, or a more serious and enthusiastic stage. Its impact has been inestimable for me.”

Ed Atkins, Artist and Chisenhale Gallery Trustee



Above Installation view of Lynette Yiadom-Boakye’s exhibition, *Extracts and Verses*, 2012. Photo: Marcus Leith.

Left Installation view of Camille Henrot’s exhibition, *The Pale Fox*, 2014. Photo: Andy Keate.

ENGAGEMENT

The *Engagement Programme* at Chisenhale Gallery comprises a broad range of activities including talks and events devised in collaboration with commissioned artists, a dedicated programme for young people, and community partnerships. The *Engagement Programme* also includes children's workshops, seminars and visits from schools and higher education institutions.

For audiences, the programme creates opportunities to discuss themes which recur across the gallery's commissions programme, and to critically reflect on timely social, political and formal questions raised by artists' work.

For each exhibition, the gallery produces contextual material, including interviews with the commissioned artists, and a reading list of related books, articles and films, all expanding on ideas within the artists' work. All of this material contributes to Chisenhale Gallery's growing online archive. Please visit the 'Watch, Read, Listen' section of our website to find out more.



*“Very informative, thorough, generous...
A fantastic resource.”*

Visitor feedback

Above Lawrence Abu Hamdan in conversation within his Chisenhale Gallery exhibition, *Earwitness Theatre*, with Stuart Comer, Chief Curator of Media and Performance Art, Museum of Modern Art, New York, 2018. Photo: Sam Nightingale.

Left Children's workshop led by The Soundhoppers, 2018. Photo: Sam Nightingale.

YOUNG PEOPLE

Chisenhale Gallery is committed to enabling greater access to contemporary art by engaging with new audiences, particularly young people. The gallery's dedicated programme for young people, *ChisenhaleHz*, places participants as decision makers and producers, opening up the institution to younger voices.

New Creatives is a series of commissioning opportunities for emerging artists aged 16–30 years who work with audio or moving image, produced in partnership with BBC Arts and Arts Council England.

The gallery continues to be an essential resource for the local education sector. The *Engagement Programme* includes *Chisenhale Gallery Presents*, a series of artists' presentations at local secondary schools, and a biannual *Creative Careers Day* offering students the opportunity to hear from a broad range of creative professionals about pursuing a future in the arts and creative industries.



“My involvement with ChisenhaleHz has been invaluable. Together with my peers I have enjoyed a great level of independence and trust. Personally, I have grown immensely during this time and treasure the confidence it will afford me in the future.”

Francis Carmody, *ChisenhaleHz* member



Right *ChisenhaleHz* visit Mandy El-Sayegh in her studio, 2019.

Above right Students from St Paul's Way Trust School participating in *Chisenhale Gallery Presents*, delivered by Milo van der Maaden and Imran Perretta, 2016.

“The sessions with Chisenhale Gallery are inspirational for the students. It helped them to think quickly and out of the box, and express thoughts and ideas in a way that they might not usually be able to.”

Samantha Hill, Head of Art, St Paul's Way Trust Secondary School

HOW TO SUPPORT

Chisenhale Gallery has an international reputation for discovering the most exciting artists working today and ensuring that those artists can flourish. Located in the heart of London's East End, the gallery has a commitment to connect with young people, schools and community organisations, making a real difference in our local borough.

Chisenhale Gallery is a registered charity and part of Arts Council England's National Portfolio. The gallery fundraises for the programme in its entirety, as well as for more than half of all core costs, through trusts, foundations and individual donations. All donations directly support the programme, enabling the gallery to keep all exhibitions and the majority of events free.

There are a number of ways you can support Chisenhale Gallery, from buying a limited edition to making a one-off donation, joining as a Friend or Patron, or helping to realise an artist's commission or programme. However large or small, every donation is greatly appreciated.



FRIENDS & PATRONS PROGRAMME

Chisenhale Gallery Friends and Patrons play a vital role in our activities and enable us to present ambitious commissions by extraordinary artists. Chisenhale Patrons enjoy exclusive invitations to private viewings of exhibitions and private collections, curator-led tours and previews of all new Chisenhale Editions.

Chisenhale Gallery Friends and Patrons give an annual contribution* of:

Director's Circle Patron: £2,500
Patron: £900
Friend: £250

*This contribution includes membership benefits and a voluntary donation that will be eligible for Gift Aid. For more information please see the Support Form insert.

Right Chisenhale Gallery Director Polly Staple and artist and Trustee Paul Maheke in conversation at the Commissions Fund Spring Lunch, 2019. Photo: Mark Blower.

Above right Friends and Patrons' event at the gallery, in association with BERTHOLD, for Mandy El-Sayegh's exhibition, 2019. Photo: Mark Blower.



COMMISSIONS FUND

The Chisenhale Gallery Commissions Fund directly supports the production of our annual programme of four major commissions.

The Fund ensures the gallery's independent approach to programming, while enabling artists to experiment, take risks and make bold new work. Commissions Fund members support annually with £10,000, for a minimum of two years, and form a dynamic group of our most committed supporters.

You can also support particular exhibitions or projects by becoming a Lead Supporter (from £10,000), Headline Supporter (from £5,000) or joining a Supporters Circle (from £2,500).

For further information about how to support Chisenhale Gallery please visit our website or email Ioanna Nitsou, Development Manager: development@chisenhale.org.uk.



Right Installation view of Ima-Abasi Okon's exhibition, *Infinite Slippage: nonRepugnant Insolvencies T!-a!-r!-r!-y!-il'-n!-gl as Hand Claps of M's Hard' Loved' Flesh [I'M irreducibly-undone because] — Quantum Leanage-Complex-Dub*, 2019. Photo: Andy Keate.



Above right Imran Perretta on set with cast and crew during filming of *the destructors*, 2019. Photo: Lenka Rayn H.

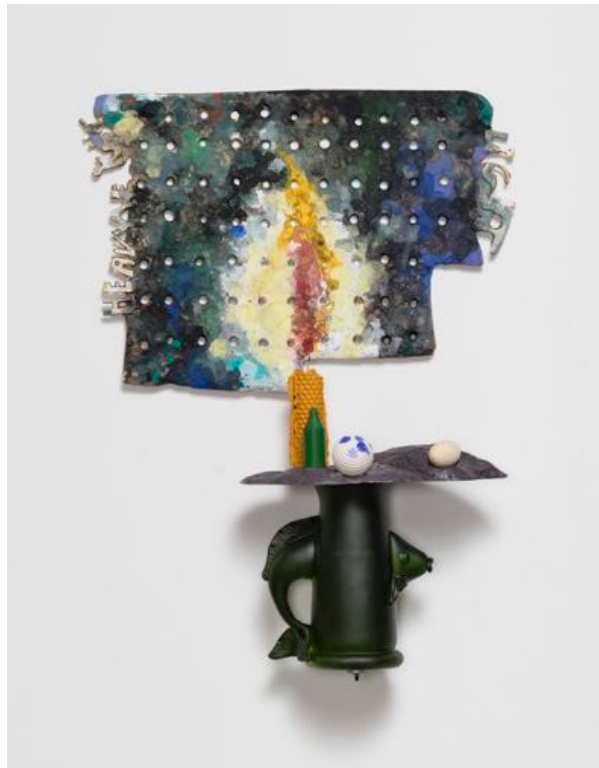
CHISENHALE EDITIONS

Chisenhale Gallery commissions and produces exclusive limited edition artworks, which are kindly donated by the artists.

Chisenhale Editions offer an opportunity to acquire affordable artworks by artists such as Sonia Boyce, Camille Henrot, Lubaina Himid, Helen Marten, David Noonan, Eddie Peake, Josephine Pryde, Jordan Wolfson and Clare Woods.

All funds raised make a direct contribution to the artistic programme, supporting the next generation of pioneering artists.

For more information and to buy an edition, please visit our online shop at www.chisenhale.org.uk/shop or email editions@chisenhale.org.uk.



Right Helen Marten,
Low Temperature Civics, 2018.
Edition of 12.
Photo: Lewis Ronald.

Above right Lubaina Himid,
The sweet sharp taste of limes,
2018. Edition of 50.
Photo: Andy Keate.

“Chisenhale Editions are beautiful prints and unique pieces by the very best emerging and established artists. Buying these editions is a great way to start or expand a collection whilst at the same time supporting Chisenhale Gallery and its innovative programming.”

Sam Talbot, Chisenhale Gallery Trustee

THANK YOU

Chisenhale Gallery is grateful to the following individuals, organisations, trusts and foundations for their generous support.

TRUSTEES

Shane Akeroyd, Ed Atkins, May Calil, Mark Godfrey, Andrew Haigh, Andrew Hale, Paul Maheke, Helen Marten, Keir McGuinness, Andrea Phillips, Alice Rawsthorn (Chair), Sam Talbot.

DEVELOPMENT COMMITTEE

Jennifer Ellis, Milovan Farronato, Heather Flow, Joseph Green, Rodolphe von Hofmannsthal, Sonja Junkers, Sibylle Rochat.

CORE FUNDER



PROGRAMME SUPPORTER

Chisenhale Gallery's Commissions Programme 2019 is supported by the Luma Foundation.

COMMISSIONS FUND

Shane Akeroyd, Heloisa Genish, Emma & Fred Goltz, Fabiana Marengi Vaselli Bond, Patrizia Memmo, Donald Porteous, Matthew Slotover & Emily King.

EXHIBITIONS & PROJECTS SUPPORTERS

Lead Supporters

Shane Akeroyd, Outset Contemporary Art Fund, #iwill programme.

Headline Supporters

Arts Council National Lottery Project Grants, BERTHOLD, Brian Boylan, The London General Practice, Joe & Marie Donnelly, Mark Hix & HIX Restaurants, Alice Rawsthorn.

Supporters Circles

Mariana & Adam Clayton; Alastair Cookson; ESSEX STREET, New York; Tracey Josephs; Lehmann Maupin; Richard & Associates; Rodeo, London/Piraeus.

DIRECTOR'S CIRCLE PATRONS

Estelle Akeroyd Hunt; Belmacz; Bistrottheque; Laura & William Burlington; Mariana & Adam Clayton; Alastair Cookson; Pilar Corrias; Daniel Benjamin Gallery; Jed Donnelly; Nicoletta Fiorucci, Fiorucci Art Trust; Fletcher Gallery Services; Stephanie & Andrew Hale; Dr. Martin Hatebur; Helen Randag Charitable Foundation; Mark Hix; Maja Hoffmann; Garrick Jones; Edouard Malingue Gallery; Carlos Marsano; Helen Marten; Keir McGuinness; Frances Reynolds; Karl Richard; Erica Roberts; Sadie Coles HQ; Patrizia Sandretto Re Rebaudengo; Sprüth Magers; Maria & Malek Sukkar; Julia Stoschek; White Cube; Lynette Yiadom-Boakye; Zabludowicz Collection; David Zwirner.

PATRONS

A.I.; Roxana Afshar; The Approach; Blackwall Green; Brian Boylan; Elisabetta Buonaiuto; May Calil; Nicolette Cavaleros & Christine Delivannis; Francise Chang; Niamh Coghlan & Richard Saltoun; Eleanor Congreve; Clemency Cooke; Tamara Corm; Thomas Dane; Charles de Bocard; Tom Dingle; Emalin; Stephen Escritt; Dr Paul Ettlinger & Raimund Berthold; Laurie Fitch; Jane & Richard Found; Galerie Sultana, Paris; Aphrodite Gonou; Taymour Grahne; Greene Naftali Gallery; Michael Guo; Andrew Haigh; Herald St; Hollybush Gardens; Isaac Joseph; Marcelle Joseph; Kendal and Partners; Frith Kerr; Johann König; Katharine Kostyál; David Levy; Sha Li; Jona Lueddeckens; Kate MacGarry; Kimiya Minoukadeh; mother's tankstation limited; Maureen Paley; Emilie Pastor; Alexander V. Petalas; Andrea Phillips; Adam Prideaux; Alice Rawsthorn; Georgina Rees; Southard Reid; Sibylle Rochat; Alex & Elinor Sainsbury; Amanda Sharp; Saadi & Zeina Soudavar; Katja & Ned Staple; Bina von Stauffenberg; Vassan & Jyoti Thavarajah; Caragh Thuring; Anna Touzin; Russell Tovey; Berna Tuğlular; Navann Ty; C J Warburton; Amanda Wilkinson; Tyler Woolcott; Worton Hall Studios; Burcu Yüksel.

FRIENDS

Carmen Blanco Santos, Hymie Dunn, Sarah L Elson, Hauser & Wirth, James Green & Ticiana Correa Green, Sonja Junkers, Gregorio Magnani, Curt Marcus, Zain Masud McGetrick, Jessica Morgan, David Noonan, Julie Oxberry, The Royal Inn on the Park, Anna Shields.

And all those who wish to remain anonymous.

Correct as of July 2019.

Chisenhale Gallery is a registered charity no. 1026175.

VISIT

Chisenhale Gallery

64 Chisenhale Road
London E3 5QZ

Telephone: +44 (0)20 8981 4518
mail@chisenhale.org.uk
www.chisenhale.org.uk

- ⊖ Mile End: 10-minute walk / 277, 425, 339 or D6 bus
- ⊖ Bethnal Green: 12-minute walk / 8 or D6 bus

Gallery opening hours during exhibitions

Wednesday – Sunday, 12–6pm

Office opening hours

Monday – Friday, 10–6pm

First Thursdays

In conjunction with late night gallery openings across East London, during exhibitions Chisenhale Gallery is open until 9pm on the first Thursday of each month.

Admission is free.

*“The must-visit venue for the newest art
in London; every show is a must-see”*

The Evening Standard

*“Friendly welcoming relaxed informative
thought provoking inspiring”*

Visitor feedback